



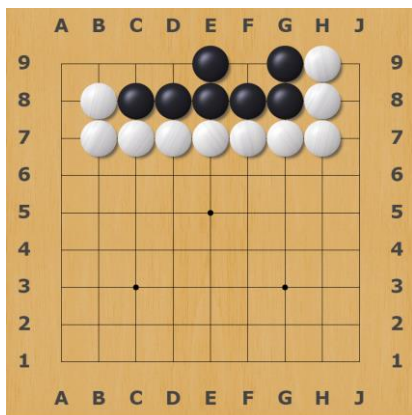
CAMBRIDGE YOUTH GO

FROM LEVEL 1 TO LEVEL 6

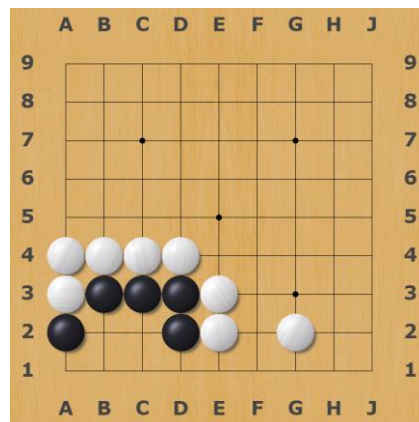
All puzzles are Black to play



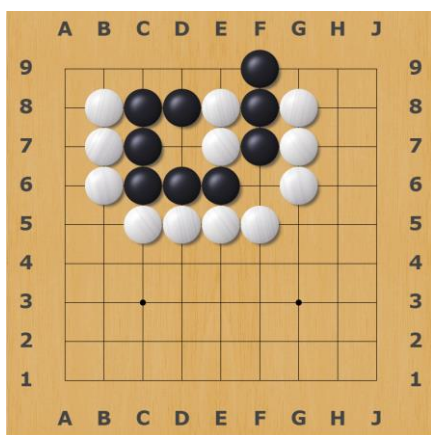
NAME:



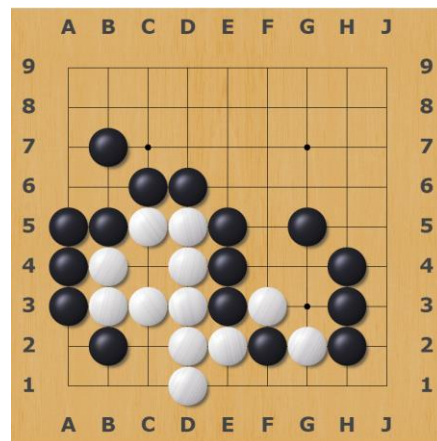
Level 1: Black to live



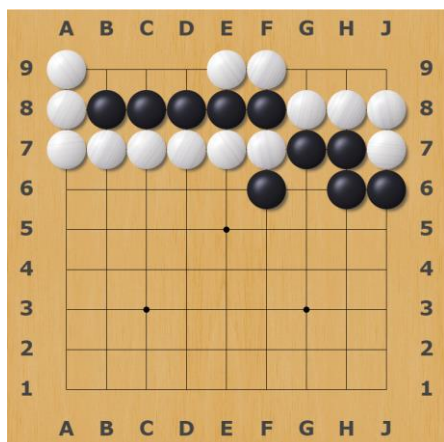
Level 2: Black to live



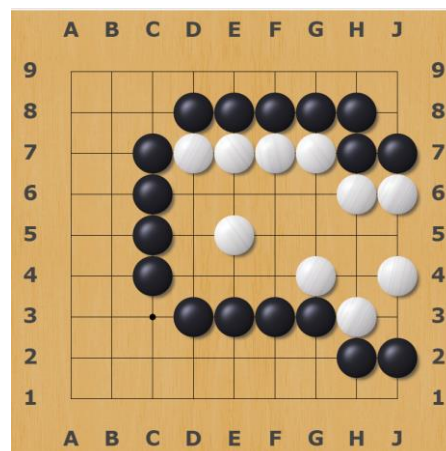
Level 3: Black to live.



Level 4: Black to kill the white group.



Level 5: Black to kill white stones in the top right



Level 6: Black to kill the white group..